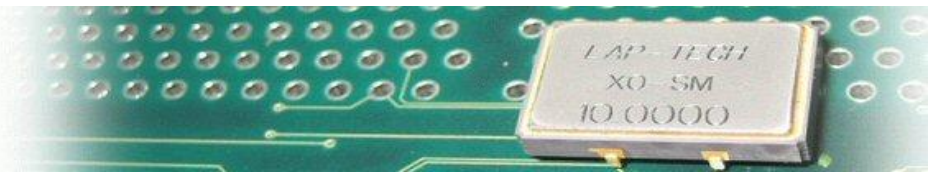




LAP-TECH INC.

"Focused on Frequency"



STANDARD FREQUENCY COMPONENTS PECL OSCILLATOR 14 DIP LPVO14D VCXO

Description

PECL Oscillator: 14 DIP

14 DIP Voltage Controlled Oscillator

10.000 MHz ~ 155.520 MHz frequency range

RoHS Compliant

Features

Positive supply voltage 3.3 V & 5V

PECL, LVDZ compatible

Wide frequency range

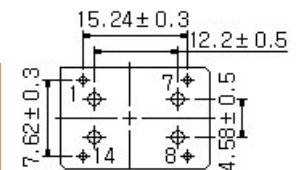
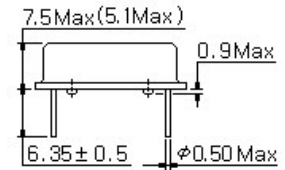
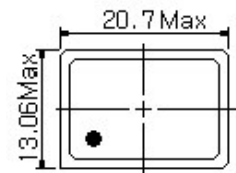
10.000 MHz ~ 155.520 MHz using fundamental crystals for exceptional Jitter performance



Electrical Specifications

<b>Type:</b>	PECL VCXO (Voltage Controlled Oscillator)
<b>Frequency Range:</b>	10.000 MHz ~ 155.520 MHz
<b>Operating Temp Range:</b>	0°C ~ +70°C (Typ.)
<b>Storage Temp Range:</b>	-55°C ~ +125°C
<b>Start Up Time:</b>	10 m Sec Max.
<b>Load Drive Capability:</b>	50 Ω
<b>Linearity:</b>	± 20 % ~ ± 5 %
<b>Frequency Stability:</b>	± 25 ppm ~ ± 100 ppm Max.
<b>Rise / Fall Time:</b>	2 n Sec Max. (20 % to 80 % of Waveform)
<b>Aging at 25 °C:</b>	± 5 ppm / Year Max.

LPVO14D

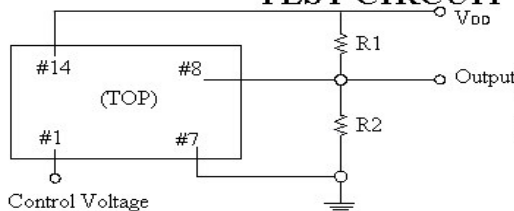


**PIN CONFIGURATION**  
 #1 VC #7 GND  
 #8 OUTPUT #14 VDD

LPVO14D PECL OSCILLATOR  
10.000 MHz ~ 155.520 MHz (VCXO'S)

Parameters		Characteristics	
Supply Voltage (VDD)		5.0 VDC ± 5 %	3.3 VDC ± 5 %
Frequency Deviation /	2.5 ± 2.0 V (or 2.5 V)	± 50 ppm ~ 150 ppm Min.	
Pin 1 Control Voltage	1.65 ± 1.65 V (or 1.5 V, 1.35 V)	± 50 ppm ~ 150 ppm Min.	
Output Voltage Logic High (VOH)	2.275 Min. (3.3 V)	3.96 Min. (5.0V)	
Output Voltage Logic Low (VOL)	1.68 Max. (3.3 V)	3.40 Max. (5.0 V)	
Duty Cycle		40 %/60 % or 45/55 (at 50 % of Waveform)	

TEST CIRCUIT



VDD	3.3V	5.0V
R1	130 Ohms	82 Ohms
R2	82 Ohms	130 Ohms